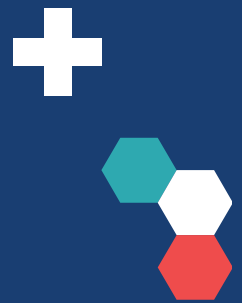


Community Nursing Research Priorities – What comes after a JLA Top10?



Louise Jones, ARC Practice Fellow

Jeanette Milne, Associate Director of Nursing Delivery NHCT



Collective nursing research leadership

Community Nursing Priority Setting Partnership



Background and rationale

The vital contribution made by community nurses has never been more important than now as care focuses on people and the public living in their own homes and communities. Community nurses are managing increasingly complex patients – despite this, few research studies have been developed to address uncertainties in practice.

Aims

- To identify unanswered questions about community nursing and prioritise the issues considered to be most important.
- To produce a Top 10 of research priorities to help researchers realise what the issues are that matter to patients, carers and clinicians.
- Share ideas, develop extended networks and reach geographic locations across England.
- Develop a publication strategy to make sure the findings reach funders, researchers and policy makers. To ensure studies are developed in response to the questions and the evidence used to underpin practice and maximise benefit to community nurses and those receiving care.

Stakeholder engagement and involvement

- Representatives from four NHS organisations: Kent Community Health NHS Foundation Trust, Leicestershire Partnership NHS Trust, Oxford Health NHS Trust and Northumbria Healthcare NHS Foundation Trust.
- Vibrant patient public involvement representatives.
- Applied Research Collaborative (ARC) – provides funding, ongoing engagement with the PSP now and beyond.
- Head of Community Nursing NHS England/ NHS Improvement.
- James Lind Alliance (JLA) advisor.

Future plans

- Top 10 evidence uncertainties will underpin the Research and Innovation pillar of NHS England's National Community Nursing Plan
- Findings will be used to support implementation of the Clinical Research Network's Primary Care Strategy
- NIHR Applied Research Collaboration funded workshop planned for October 2021 to fund a number of the top 10 evidence uncertainties and to promote community nursing engagement in research
- Academic publications underway to share findings internationally amongst clinicians, academics, patients and the public

James Lind Alliance process – brings patients, carers and clinicians together in Priority Setting Partnerships (PSPs) to identify and prioritise the Top 10 unanswered questions or evidence uncertainties that they agree are the most important.

www.arc-oxtv.nihr.ac.uk/research/Research_priorities_for_community_nursing

National Institute of Health Research 70@70 – provides opportunity to raise profile and build capacity across nursing and midwifery.

www.nihr.ac.uk/documents/7070-nihr-senior-nurse-and-midwife-research-leader-programme/22750



Authors:

Louise Jones, Lead Community Research Nurse, Northumbria Healthcare NHS Foundation Trust; Lee Tomlinson, Lead Nurse for Research and Research and Development Manager, Kent Community Health NHS Foundation Trust; Claire Armitage, Deputy Head of Nursing for Community Mental Health Services, Leicestershire Partnership NHS Trust; Catherine Henshall, Leader in Nursing,

Oxford Brookes University, Head of Research Delivery, Oxford Health NHS Trust; NIHR Associate Director of Nursing. Please note, the views expressed in this article are those of the authors. CH, LT, CA, LJ are supported by the NIHR Senior Nurse and Midwife Research Leader Programme and CH is also supported by the NIHR Oxford Cognitive Health Clinical Research Facility.

References:

Integration and innovation: Working together to improve health and social care for all (Department of Health and Social Care, 11 February, 2021)

Understanding quality in district nursing services – learning from patients, carers and staff (The Kings Fund) September 2016.

Revitalising community nursing research. Tomlinson, Jones, Armitage and Henshall. Journal of Community Nursing Research. 2021, Vol 35, No 2.

The National Community Nursing Plan, 2021-2026 is in draft for engagement – 2021. Led by Head of Community Nursing NHS England/Improvement.

$$E + R = O$$

Event + Response = Outcome

Top 10 Research priorities for Community Nursing.

- 1 How can community nurse teams better meet the complex needs of patients with multiple health conditions?
- 2 How can community nurses promote shared care/self-care amongst patients, and support carers to provide some aspects of care (e.g. changing dressings)?
- 3 How can community nurse teams best contribute to the management of acutely ill patients at home? What difference does this make to hospital admissions?
- 4 What are the best ways for community nurses to involve unpaid carers/ relatives/ friends in decisions about their loved one's treatment and care?
- 5 How can community nurse teams work effectively with social services and care services to improve the quality of patient care?
- 6 How has community nursing changed in response to Covid-19? Are any of the changes (e.g. timed visits, new skills and working from home) worth keeping?
- 7 Does seeing the same community nurse(s) over time make a difference to the quality of patient care?
- 8 How can community nurses work effectively with other health professionals in hospitals and specialist community services to improve patient care?
- 9 What are the stresses on community nurses and what impact does this have on their health and well-being? How can this be improved?
- 10 How can nurses be encouraged to become community nurses and to stay in the profession?

Revitalising Community Nursing Research



Revitalising Community Nursing Research Workshop

In October 2021, the James Lind Alliance Priority Setting Partnership identified the '[Top 10 Community Nursing Research Priorities](#)'.

These priorities were cited in the Chief Nursing Officer for England's strategic plan '[Making Research Matter](#)'.



Join the workshop and share your views

- We are looking for Senior Nurses working across the Community portfolio at a strategic level, to help develop the top priorities into relevant community nursing research questions.
- A regional workshop will be facilitated by a James Lind Alliance Advisor, which will bring together stakeholders and research advisors to develop priorities relevant to community nursing.

When: Tuesday 24 January, 10am until 3pm, venue TBC

To register, please email: louise.jones@northumbria-healthcare.nhs.uk

This work is supported by the National Institute for Health and Care Research (NIHR) Applied Research Collaboration (ARC) North East and North Cumbria

NIHR | Applied Research Collaboration
North East and North Cumbria

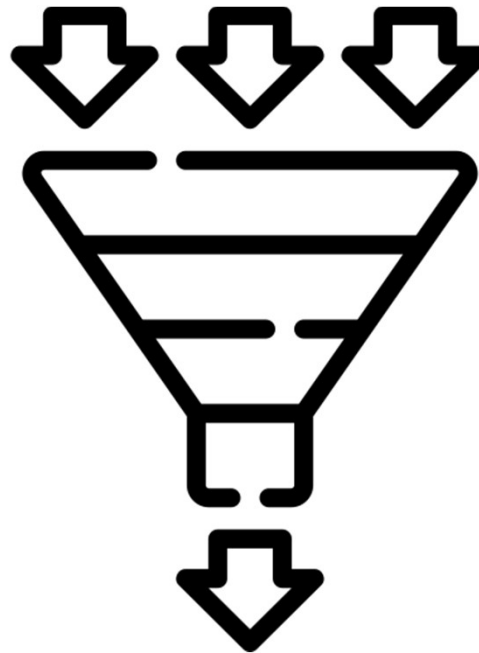
How can community nurse teams better meet the complex needs of patients with multiple health conditions?

How can nurses be encouraged to become community nurses and to stay in the profession?

How can community nurse teams best contribute to the management of acutely ill patients at home? What difference does this make to hospital admissions?

What are the stresses on community nurses and what impact does this have on their health and well-being? How can this be improved?

How can community nurses promote shared care/self-care amongst patients, and support carers to provide some aspects of care (e.g. changing dressings)?



Local, Regional & National Research

Data Analysis

Chief Investigator

Protocol

Site Investigator Visit

研究

Randomised Control Trial

Qualitative

Riset

Adverse Event



Google Translate

Pētījumi

Principal Investigator

Investigación

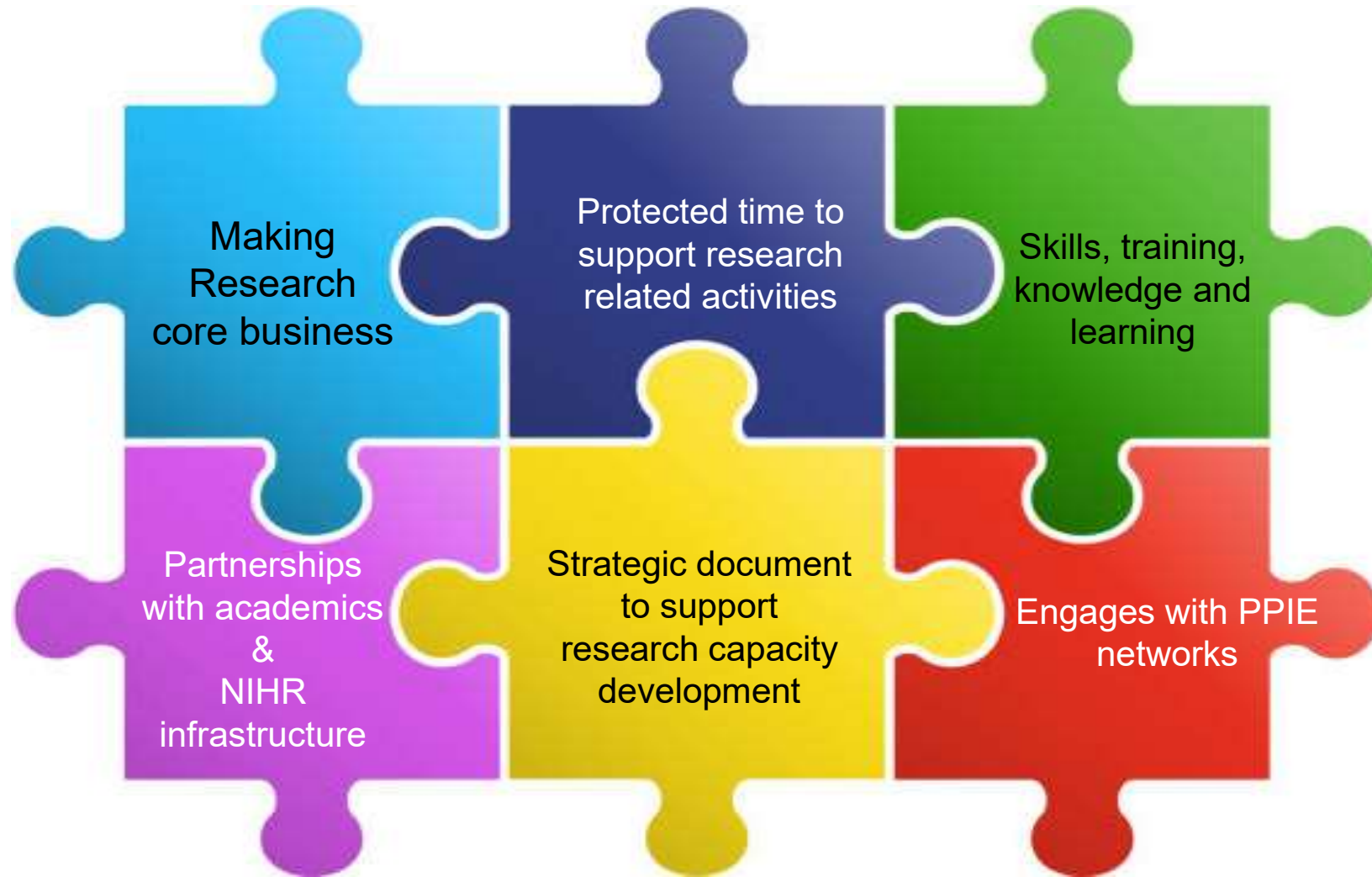
Intervention

Case Report Form

Quantitative

Research Governance

Organisational Research Readiness



Next Steps

Local

'Barriers and drivers to enabling self/shared-care, understanding patient and professional perspectives'

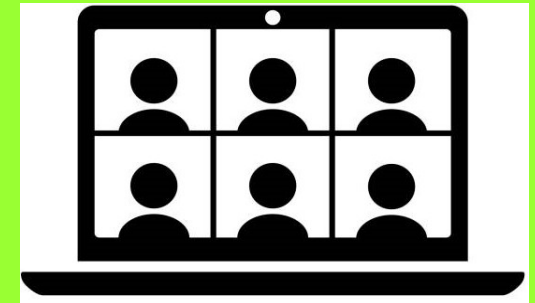
Links to priority number 2 of Top 10

Regional



National

7th June reviewing the questions developed and prioritised from the regional workshops



Thank You

